

Celebrate **20 years** of the  
Deskbook and the Deskbook Seminar!

**The New 5th Edition**

# Minnesota Workers' Compensation Deskbook

Receive the New  
**Deskbook**  
(and a Subscription to the  
new Deskbook Online)  
at **2 Great**  
**Deskbook Seminars**

**1** December 7, 2012

**2** December 13, 2012

## The *Minnesota Workers' Compensation Deskbook* – Completely Rewritten and Better Than Ever!

The most important and best reference for Minnesota workers' compensation attorneys and judges has gotten even better. Our dedicated authors and great editors have examined, updated, rewritten and made the *Minnesota Workers' Compensation Deskbook* an even more indispensable resource.

**Whether You're Evaluating a Case, Preparing for a Hearing, Writing a Brief, Preparing for Trial or Just Searching for a Case – The *Deskbook* is A Must!**

To practice workers' compensation in Minnesota accurately and efficiently, the *Deskbook* is invaluable. It covers nearly every practice issue imaginable, providing you with the orientation, the analysis and the authorities you need to cite. There's no doubt – you'll be "smarter" and more effective using the *Minnesota Workers' Compensation Deskbook*.

**Now Citing More Than 3900 Cases and Statutes!**

The *Deskbook* is replete with authority – case, statutory and regulatory. Find what you need by detailed chapter tables of contents, a key word index, or a case and statutory index. The *Deskbook* helps you find what you need when you need it.

**It's an Authoritative Text – With the Practicing Attorney in Mind!**

The *Minnesota Workers' Compensation Deskbook* has become the most authoritative secondary source on Minnesota workers' compensation law. The *Deskbook* cites all the important cases, correctly analyzes case, statutory and regulatory authorities and provides the most precise and up-to-date information available.

Not only do you receive correct legal analysis, but very practical practice tips and pointers for both petitioner and defense attorneys. There is nowhere else you can find such a resource to help you in your daily practice.

**You'll Receive the 5th Edition of the *Deskbook* When You Attend One of Our Great Deskbook Seminars**



We are offering 2 distinct deskbook seminars, one on Friday, December 7 and a second on Thursday, December 13, 2012. Attend one of these seminars and you'll receive the new 5th Edition of the *Workers' Compensation Deskbook* (and a subscription to the new *Deskbook Online*, too!). If you choose to attend both seminars you'll receive a substantial discount on the second seminar (though you'll receive only one *Deskbook*).

**You'll Also Receive a One Year Subscription to the *Deskbook Online* – With Links to the Full Text of the Cited Cases, Statutes and Regulations!**


In addition to the hard copy text, attendees at the seminar receive a one year subscription to the *Deskbook Online*. The online *Deskbook* is easy to use and navigate through. Among its many advantages:

- It's fully searchable by keyword, case, statute and regulation.
- You can jump from the detailed table of contents directly to the section of the chapter you need.
- You can search by case name and find every place the case is cited.
- You can click on an authority and see the full text of the cited case, statute or regulation.
- You can cut and paste portions of the text into briefs and memos.
- It's usable on not only desktops and laptops, but tablets as well.

All in all, it's a great bonus for all busy practitioners!

Minnesota CLE Conference Center  
600 Nicollet Avenue, Suite 370 | Minneapolis

Video replay details inside.

 Minnesota State Bar Association  
Continuing Legal Education  
Your State Bar at Work For You

# Minnesota Workers' Compensation Deskbook

## Table of Contents

CHAPTER 1 <b>Compensable Claims / Covered Employees</b> – Barbara L. Heck, Mark J. Fellman	CHAPTER 13 <b>Special Compensation Fund</b> – Mark A. Kleinschmidt, Sara J. Stoltman
CHAPTER 2 <b>Arising Out of and In the Course of Employment</b> – Lorrie L. Bescheinen, Barbara L. Heck	CHAPTER 14 <b>Workers' Compensation Reinsurance Association</b> – Carl W. Cummins, III
CHAPTER 3 <b>Time-Barred Claims</b> – Janet Monson	CHAPTER 15 <b>Coordination of Benefits</b> – Fay E. Fishman, James A. Schaps
CHAPTER 4 <b>Wage Loss Benefits</b> • 4.1 Temporary Total Disability – Douglas J. Brown • 4.2 Permanent Total Disability – Robert C. Falsani, Sean M. Quinn • 4.3 Temporary Partial Disability – Jeffrey W. Jacobs	CHAPTER 16 <b>Medicare</b> – Stephen R. Daly, Joseph P. Mitchell
CHAPTER 5 <b>Permanent Partial Disability</b> – David C. Wulff	CHAPTER 17 <b>Settlement Agreement / Vacation of Awards</b> – Hon. Gary Hall, Gregg A. Johnson
CHAPTER 6 <b>Death / Dependency Benefits</b> – Thomas P. Kieselbach	CHAPTER 18 <b>Third-Party Practice</b> – Wilbur W. Fluegel
CHAPTER 7 <b>Medical Benefits</b> – Charlene K. Feenstra, David B. Kempston	CHAPTER 19 <b>Employment Law Issues in Workers' Compensation Cases</b> – Howard L. Bolter, Mary A. Rice
CHAPTER 8 <b>Rehabilitation and Retraining</b> – Douglas J. Brown, Grant R. Hartman	CHAPTER 20 <b>Practice and Procedure</b> – Kathleen S. Bray, Hon. Jeanne E. Knight, Jeffrey J. Lindquist
CHAPTER 9 <b>Rates / Wages</b> – Thomas D. Mottaz	CHAPTER 21 <b>Practice Forms</b> – Deborah L. Crowley, Michael F. Scully
CHAPTER 10 <b>Attorneys' Fees</b> – Grant R. Hartman	<b>TABLE OF AUTHORITIES</b> • Case Index • Statute Index • Rules Index • Minnesota Session Laws / Miscellaneous Index
CHAPTER 11 <b>Penalties / Interests / Costs</b> – Karen M. Charlson	<b>SUBJECT INDEX</b>
CHAPTER 12 <b>Apportionment, Contribution and Reimbursement</b> – Jay T. Hartman	

# 2 Great Deskbook Seminars From Which to Choose!

## 1 Minnesota Workers' Compensation Practice 1 December 7, 2012

8:15 – 8:45 a.m.  
CHECK-IN & CONTINENTAL BREAKFAST

8:45 – 9:00 a.m.  
WELCOME & INTRODUCTION

9:00 – 9:25 a.m.  
**Compensable Claims / Covered Employees**

Including jurisdiction and independent contractor status.  
– Barbara L. Heck  
– Mark J. Fellman

9:25 – 9:55 a.m.  
**Arising Out of and in the Course of Employment**

Including idiopathic injuries.  
– Barbara L. Heck  
– Lorrie L. Bescheinen

9:55 – 10:30 a.m.  
**Wage Loss Benefits – Permanent Total**

Including the "retirement" issues.  
– Robert C. Falsani  
– Sean M. Quinn

10:30 – 10:40 a.m.  
QUESTIONS & ANSWERS

10:40 – 10:55 a.m.  
BREAK

10:55 – 11:20 a.m.  
**Apportionment, Contribution and Reimbursement**

– Jay T. Hartman

11:20 – 11:45 a.m.  
**Wage Loss Benefits – Temporary Total**

– Douglas J. Brown

11:45 a.m. – 12:00 p.m.  
QUESTIONS & ANSWERS

12:00 – 1:00 p.m.  
LUNCH (ON YOUR OWN)

1:00 – 1:30 p.m.  
**Permanent Partial Disability**

Including the new changes to the PPD schedules.  
– David C. Wulff

1:30 – 1:50 p.m.  
**Death / Dependency Benefits**

Including executor and guardianship charges.  
– Thomas P. Kieselbach

1:50 – 2:20 p.m.  
**Medical Benefits**

Including medical parameters.  
– David B. Kempston  
– Charlene K. Feenstra

2:20 – 2:35 p.m.  
QUESTIONS & ANSWERS

2:35 – 2:50 p.m.  
BREAK

2:50 – 3:20 p.m.  
**Rehabilitation and Retraining**

With special emphasis on retraining.  
– Grant R. Hartman  
– Douglas J. Brown

3:20 – 3:40 p.m.  
**Third Party Practice**

– Wilbur W. Fluegel

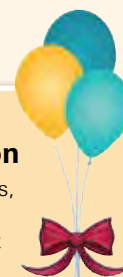
3:40 – 4:05 p.m.  
**Attorneys' Fees**

Including non-contingent excess and add-on fees.  
– Grant R. Hartman

4:05 – 4:15 p.m.  
QUESTIONS & ANSWERS

4:15 – 5:30 p.m.  
**The Celebration Reception**

A fabulous reception with colleagues, friends, good food and drink. Plus drawings for 2 iPads and other great prizes!



## 2 Minnesota Workers' Compensation Practice 2 December 13, 2012

8:15 – 8:45 a.m.  
CHECK-IN & CONTINENTAL BREAKFAST

8:45 – 9:00 a.m.  
WELCOME & INTRODUCTION

9:00 – 9:25 a.m.  
**Time-Barred Claims**

Including the new *Frontier Communications* case.  
– Janet Monson

9:25 – 9:45 a.m.  
**Penalties / Interest / Costs**

Including *Kriesel* and its impact.  
– Karen M. Charlson

9:45 – 10:00 a.m.  
**Rates / Wages**

– Thomas D. Mottaz

10:00 – 10:25 a.m.  
**Wage Loss Benefits – Temporary Partial**

– Jeffrey W. Jacobs

10:25 – 10:35 a.m.  
QUESTIONS & ANSWERS

10:35 – 10:50 a.m.  
BREAK

10:50 – 11:20 a.m.  
**Coordination of Benefits**

Including ERISA issues and Social Security coordination language.  
– Fay E. Fishman  
– James A. Schaps

11:20 a.m. – 12:00 p.m.

**Medicare**

Including avoiding Medicare Set-asides and proceeding with Medicare Set-asides without CMS approval.  
– Stephen R. Daly  
– Joseph P. Mitchell

12:00 – 12:15 p.m.  
QUESTIONS & ANSWERS

12:15 – 1:15 p.m.  
LUNCH (ON YOUR OWN)

1:15 – 1:40 p.m.  
**Workers' Compensation Reinsurance Association**

Including settlement valuation issues.  
– Carl W. Cummins, III

1:40 – 2:10 p.m.  
**Employment Law Issues for Workers' Compensation Practitioners**

Key information about typical employment issues arising in work comp cases, including FMLA, ADA and retaliation.  
– Howard L. Bolter  
– Mary A. Rice

2:10 – 2:45 p.m.

**Practice and Procedure**

Including evidence, discovery and other procedural matters, plus the new electronic filing system.  
– Kathleen S. Bray  
– Judge Jeanne E. Knight  
– Jeffrey J. Lindquist

2:45 – 3:00 p.m.  
QUESTIONS & ANSWERS

3:00 – 3:15 p.m.  
BREAK

3:15 – 3:40 p.m.

**Special Compensation Fund**

With special emphasis on uninsured employers.  
– Mark A. Kleinschmidt  
– Sara J. Stoltman

3:40 – 4:00 p.m.

**Practice Forms**

– Deborah L. Crowley  
– Michael F. Scully

4:00 – 4:15 p.m.  
QUESTIONS & ANSWERS

# Deskbook Registration / Order Form

**1 ATTEND BOTH DAYS** – Attend both Seminar 1 & 2, live or video replay. Includes 1 copy of the new 5th edition *Workers' Compensation Deskbook* and a one year subscription to the *Deskbook Online*.

**PLEASE "✓" APPROPRIATE BOX BELOW:**

\$540 MSBA member       \$540 paralegal       \$620 standard rate

I have a Minnesota CLE Season Pass<sup>SM</sup>. Pass # \_\_\_\_\_

---

**SEMINAR #1: (Choose one)**

LIVE – December 7, 2012

*OR*

VIDEO:

Location: \_\_\_\_\_

Date: \_\_\_\_\_

**SEMINAR #2: (Choose one)**

LIVE – December 13, 2012

*OR*

VIDEO:

Location: \_\_\_\_\_

Date: \_\_\_\_\_

**2 SEMINAR #1 ONLY** – Attend only Seminar 1, live or video replay. Includes 1 copy of the new 5th edition *Worker's Compensation Deskbook* and a one year subscription to the *Deskbook Online*.

**PLEASE "✓" APPROPRIATE BOX BELOW:** 742-13 | jhaj

\$395 MSBA member       \$395 paralegal       \$475 standard rate

I have a Minnesota CLE Season Pass<sup>SM</sup>. Pass # \_\_\_\_\_

---

**SEMINAR #1: (Choose one)**

LIVE – December 7, 2012      *OR*       VIDEO:

Location: \_\_\_\_\_

Date: \_\_\_\_\_

**3 SEMINAR #2 ONLY** – Attend only Seminar 2, live or video replay. Includes 1 copy of the new 5th edition *Worker's Compensation Deskbook* and a one year subscription to the *Deskbook Online*.

**PLEASE "✓" APPROPRIATE BOX BELOW:** 743-13 | jhaj

\$395 MSBA member       \$395 paralegal       \$475 standard rate

I have a Minnesota CLE Season Pass<sup>SM</sup>. Pass # \_\_\_\_\_

---

**SEMINAR #2: (Choose one)**

LIVE – December 13, 2012      *OR*       VIDEO:

Location: \_\_\_\_\_

Date: \_\_\_\_\_

## Dates & Locations

**Minnesota Workers' Compensation Practice 1**

**LIVE PRESENTATION:**  
**Friday, December 7, 2012**  
 Minnesota CLE Conference Center  
 600 Nicollet Mall, Suite 370; Minneapolis

**VIDEO REPLAYS:**  
**Minneapolis – 1/21/13**  
**(Reg. 8:30; Replay 9:00)**  
 Minnesota CLE Conference Center  
 600 Nicollet Mall, Suite 370

**Duluth – 2/22/13**  
**(Reg. 8:30; Replay 9:00)**  
 Radisson Hotel Duluth—Harborview  
 505 West Superior Street

**Mankato – 1/16/13**  
**(Reg. 8:15; Replay 8:30)**  
 Rosengren Kohlmeyer Law Office  
 150 St. Andrew's Court, Suite 110

**Saint Cloud Area – 2/15/13**  
**(Reg. 8:30; Replay 9:00)**  
 Minnesota School of Business  
 1201 Second Street South, Waite Park

**Minnesota Workers' Compensation Practice 2**

**LIVE PRESENTATION:**  
**Thursday, December 13, 2012**  
 Minnesota CLE Conference Center  
 600 Nicollet Mall, Suite 370; Minneapolis

**VIDEO REPLAYS:**  
**Minneapolis – 1/22/13**  
**(Reg. 8:30; Replay 9:00)**  
 Minnesota CLE Conference Center  
 600 Nicollet Mall, Suite 370

**Duluth – 3/1/13**  
**(Reg. 8:30; Replay 9:00)**  
 Radisson Hotel Duluth—Harborview  
 505 West Superior Street

**Mankato – 1/17/13**  
**(Reg. 8:15; Replay 8:30)**  
 Rosengren Kohlmeyer Law Office  
 150 St. Andrew's Court, Suite 110

**Saint Cloud Area – 2/22/13**  
**(Reg. 8:30; Replay 9:00)**  
 Minnesota School of Business  
 1201 Second Street South, Waite Park

**4 Can't Attend?**

You can still get the all-new 5th Edition of the *Minnesota Workers' Compensation Deskbook!*

I cannot attend. Please send me the following:  
 \_\_\_\_\_ copy(ies) of the **Workers' Compensation Deskbook** in hard copy at \$195 each.

To order the *Deskbook Online*, go to [www.minncle.org](http://www.minncle.org) after the December 7 seminar.

COST OF ITEM(S)	S & H
\$75.01 – 100 .....	\$8
\$100.01 – 150 .....	\$9
\$150.01 – 250 .....	\$12
\$250.01 + .....	\$15
Expedited shipping available	
<b>TAX ON SUBTOTAL</b>	
Pick the appropriate tax based on where the book is received.	
Minneapolis, MN .....	7.775%
Saint Paul, MN .....	7.625%
Hennepin Co. (outside Mpls.) .....	7.275%
Ramsey Co. (outside St. Paul) .....	7.125%
Anoka, Dakota, Washington Co. .....	7.125%
All other MN .....	6.875%
Outside MN .....	exempt

**Check here if address below is new.**

Name \_\_\_\_\_ (first) \_\_\_\_\_ (mi) \_\_\_\_\_ (last)

Firm \_\_\_\_\_

Address \_\_\_\_\_

City/State/Zip \_\_\_\_\_

Phone \_\_\_\_\_

Fax \_\_\_\_\_

E-mail \_\_\_\_\_

Attorney License # (if applicable) \_\_\_\_\_

**NEW LAWYER DISCOUNT!**

I was first admitted to the bar after December 7, 2009, and have deducted \$60 from the registration fee marked at left.

**ENCLOSED IS \$ \_\_\_\_\_ BY:**

Check (payable to Minnesota CLE)

VISA       MasterCard       Discover       AmEx

Card No. \_\_\_\_\_ Exp. \_\_\_\_\_

Signature \_\_\_\_\_

**MAIL TO:**  
 Minnesota CLE  
 2550 University Ave. W.  
 Suite 160-S  
 St. Paul, MN 55114

**FAX TO:**  
 651-227-6262

**GO ONLINE:**  
[www.minncle.org](http://www.minncle.org)

**OR CALL:**  
 651-227-8266 or  
 800-759-8840

## Seminar Information

**CREDITS**

**Minnesota Workers' Compensation Practice 1:** Minnesota CLE has applied to the Minnesota State Board of CLE for **5.75 CLE credits**.

**Minnesota Workers' Compensation Practice 2:** Minnesota CLE has applied to the Minnesota State Board of CLE for **5.75 CLE credits**.

**NEW LAWYER SCHOLARSHIP PROGRAM**

In recognition of the challenges facing lawyers entering the profession, Minnesota Continuing Legal Education has established a scholarship program for unemployed and underemployed lawyers admitted less than three years. Those wishing to apply for such assistance should contact Grant at **651-254-2111** or [gdvies@minncle.org](mailto:gdvies@minncle.org) for details.

**CANCELLATION / NO-SHOW POLICY**

Paid registrants who cancel their registration at least 3 business days before the program will receive a full credit on their account; if fewer than 3 business days, a \$25 administrative fee will be deducted. Paid registrants who fail to attend will receive the written materials. Passholders may purchase the course materials at 50% of the full retail price.

**ACCOMMODATION**

If you have a disability and need an accommodation in order to attend this seminar, please contact Minnesota CLE as soon as possible at 2550 University Avenue West, Suite 160-S, Saint Paul, MN 55114 or call 651-227-8266 or 800-759-8840.

**QUESTIONS?**

Please call Minnesota CLE at 651-227-8266 or 800-759-8840 or visit us online at [www.minncle.org](http://www.minncle.org).



Minnesota State Bar Association  
 Continuing Legal Education  
 2550 UNIVERSITY AVE W #160-S, SAINT PAUL MN 55114

Nonprofit Org.  
 U.S. Postage  
 PAID  
 Minnesota Continuing Legal Education

**DATED MATERIAL — PLEASE EXPEDITE!**

# Faculty & Authors

**Deskbook Editors**

**Jay T. Hartman**  
 Heacox Hartman Koshmrl Cosgriff & Johnson PA  
 Saint Paul

**Thomas D. Mottaz**  
 Thomas D. Mottaz Law Office  
 Coon Rapids

**Carl W. Cummins, III**  
 Workers Compensation Reinsurance Association  
 Saint Paul

**Stephen R. Daly**  
 Kueppers, Kronschnabel, & Daly PA  
 Saint Paul

**Robert C. Falsani**  
 Falsani Balmer Peterson Quinn & Beyer  
 Duluth

**Charlene K. Feenstra**  
 Heacox Hartman Koshmrl Cosgriff & Johnson PA  
 Saint Paul

**Mark J. Fellman**  
 Fellman Law Office  
 Saint Paul

**Fay E. Fishman**  
 Peterson & Fishman PLLP  
 Minneapolis

**Wilbur W. Fluegel**  
 Fluegel Law Office  
 Minneapolis

**Hon. Gary Hall**  
 Minnesota Workers' Compensation Court of Appeals  
 Saint Paul

**Grant R. Hartman**  
 Law Office of Grant R. Hartman  
 Eden Prairie

**Barbara L. Heck**  
 John G Ness & Associates  
 Saint Paul

**Jeffrey W. Jacobs**  
 Wilkerson & Hegna  
 Edina

**Gregg A. Johnson**  
 Heacox, Hartman, Koshmrl, Cosgriff & Johnson PA  
 Saint Paul

**David B. Kempston**  
 Thomas D Mottaz Law Office  
 Coon Rapids

**Thomas P. Kieselbach**  
 Cousineau McGuire Chtd  
 Saint Louis Park

**Mark A. Kleinschmidt**  
 Cousineau McGuire Chtd  
 Saint Louis Park

**Hon. Jeanne E. Knight**  
 Office of Administrative Hearings  
 Saint Paul

**Jeffrey J. Lindquist**  
 Pustorino Tilton Parrington & Lindquist PLLC  
 Edina

**Joseph P. Mitchell**  
 Heacox, Hartman, Koshmrl, Cosgriff & Johnson PA  
 Saint Paul

**Janet Monson**  
 Aafedt Forde Gray Monson & Hager PA  
 Minneapolis

**Sean M. Quinn**  
 Falsani Balmer Peterson Quinn & Beyer  
 Duluth

**Mary A. Rice**  
 Fafinski Mark & Johnson PA  
 Eden Prairie

**James A. Schaps**  
 Hansen Dordell Bradt Odlaug & Bradt PLLP  
 Arden Hills

**Michael F. Scully**  
 Sieben Grose Von Holtum & Carey LTD  
 Minneapolis

**Sara J. Stoltman**  
 Minnesota Dept. of Labor & Industry  
 Saint Paul

**David C. Wulff**  
 Law Office of David C. Wulff  
 Roseville